

Doing it Differently

Ideas for D&T accommodation

The following file is a case study to show aspects of D&T accommodation in just one school

The purpose of this case study is to provide ideas and talking points for those involved in the refurbishment or new – build of D&T accommodation in secondary schools

This case study is not presented as an ‘ideal solution’ applicable to all schools

School:

Hadley Learning Community – Telford - TF1 5NU

Age range / type:

5 – 16, A primary, special and secondary school on one site. The school is a specialist Engineering College

A PFI school which opened in September 2006

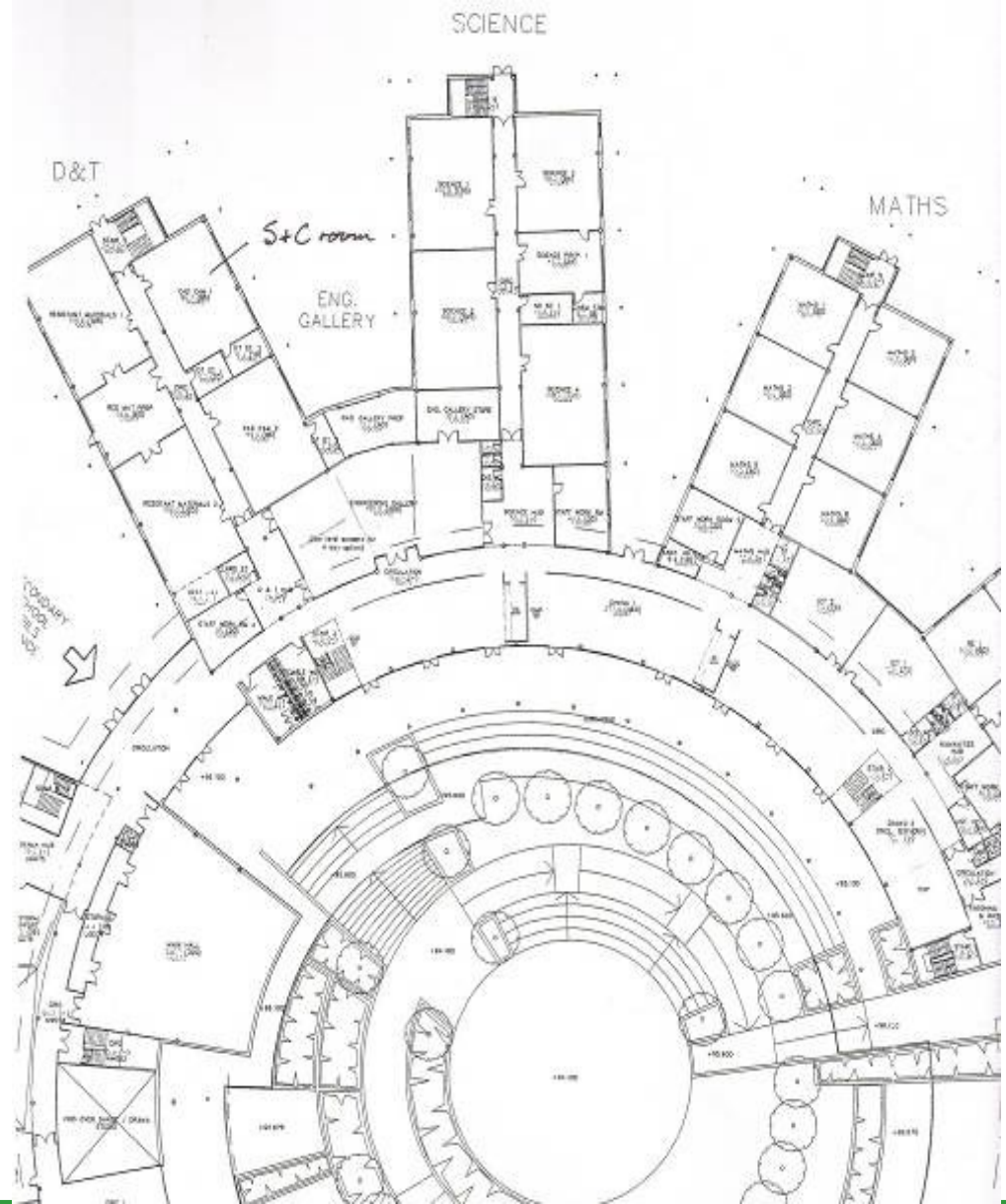
D&T subjects taught:

GCSE's: Food Technology, Textiles, Resistant Materials,
DA Engineering

Focus of this case study:

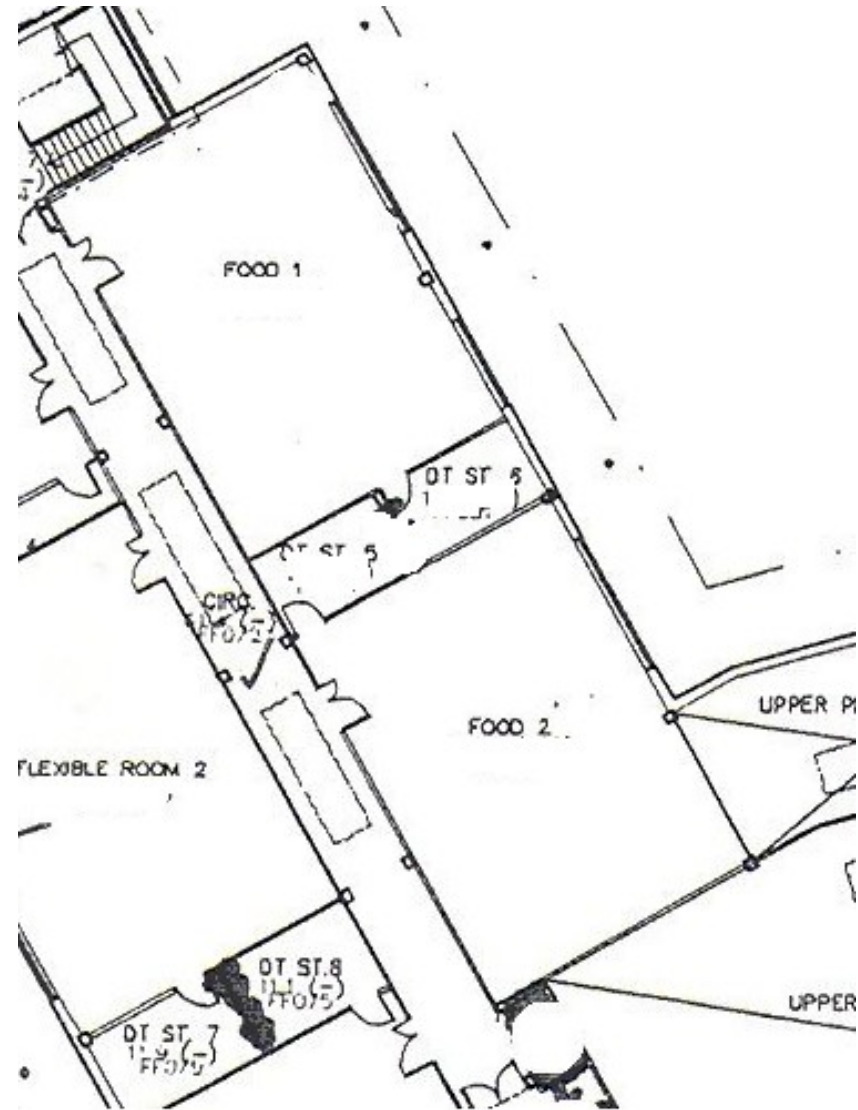
Food Technology provision

The secondary school has curriculum focussed blocks, on 2 floors, which radiate out from the centre.



The 2 food rooms are both over 120 sq mtrs and are connected by an office / preparation area.

One of the rooms has provision for industrial processes within food.





The community entrance to HLC



The 'radiating' subject blocks at HLC



Room view showing industrial food provision at the back of the room



Loose tables at the end of each bay can be moved around for theory, demonstration or product evaluation work.

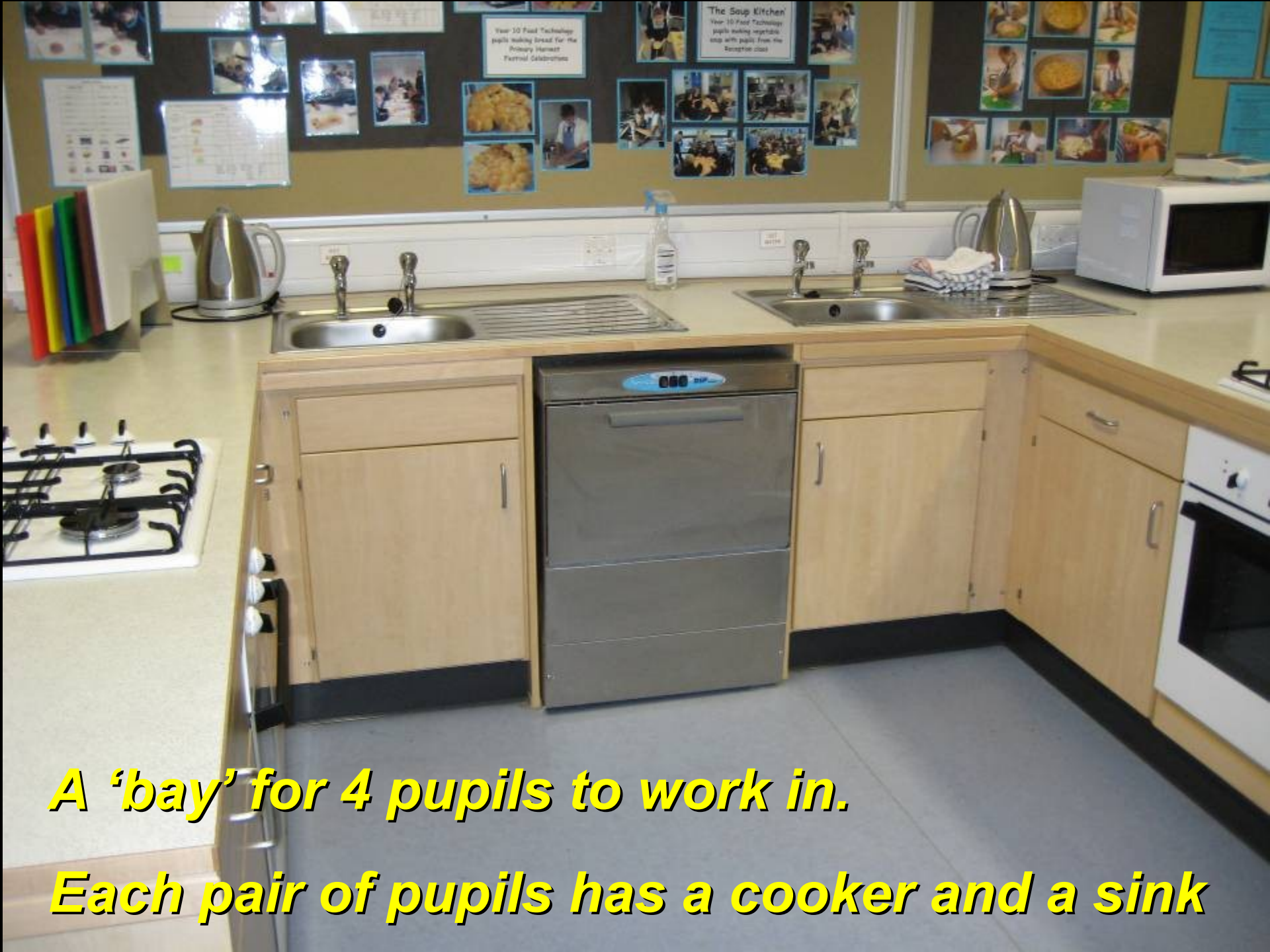


The food technology demonstration point

Note: this includes a side sink, an induction hob, an IWB with downwards facing camera (eventually) and a front facing oven



The teacher's demonstration area



A 'bay' for 4 pupils to work in.

Each pair of pupils has a cooker and a sink

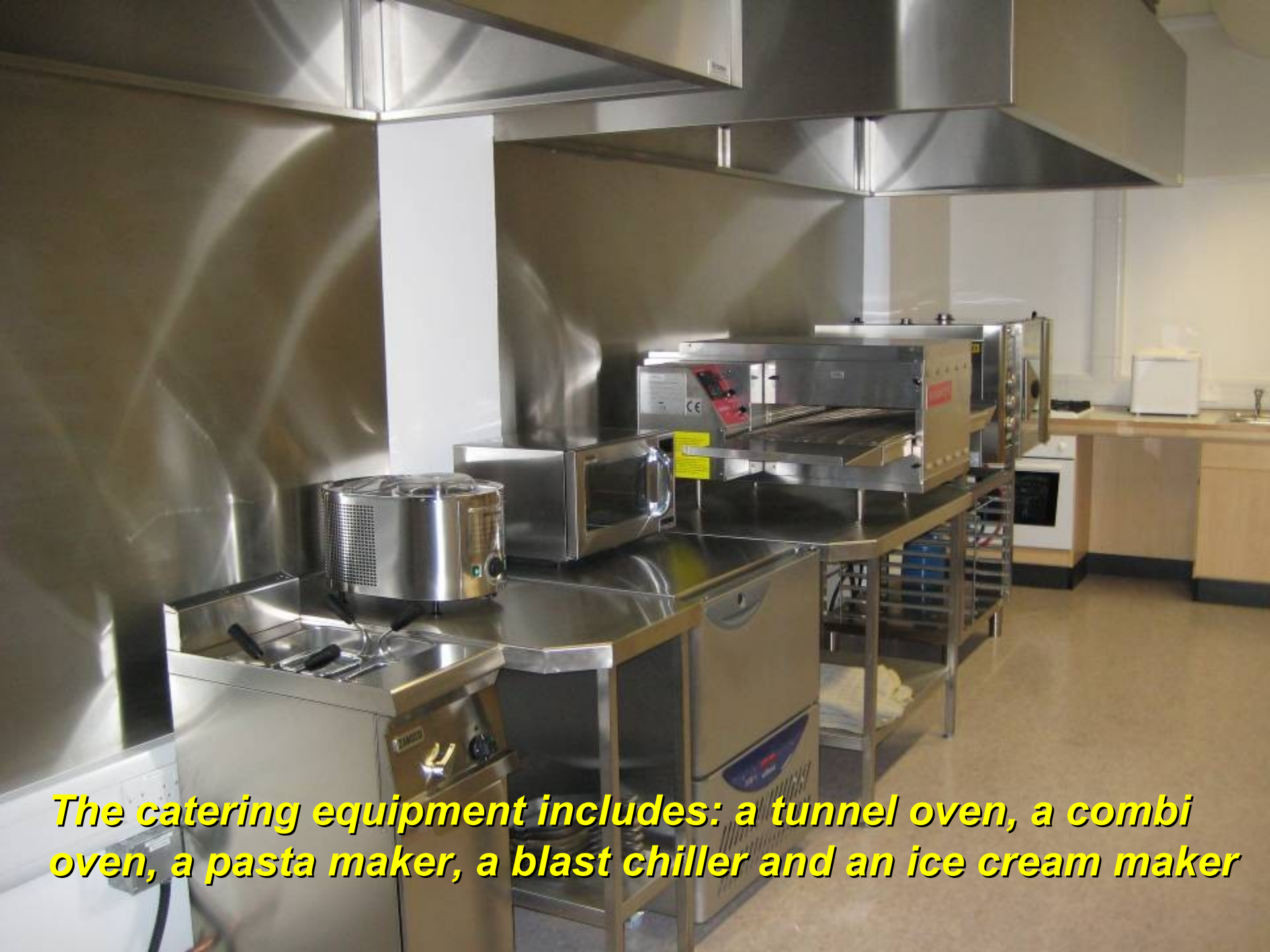


Each room has 2 hand-wash sinks.

Each 'bay' in each room has an industrial dishwasher with a quick cycle wash



The dishwashers should have automatic dispensing of caustic products which are refilled by adults only



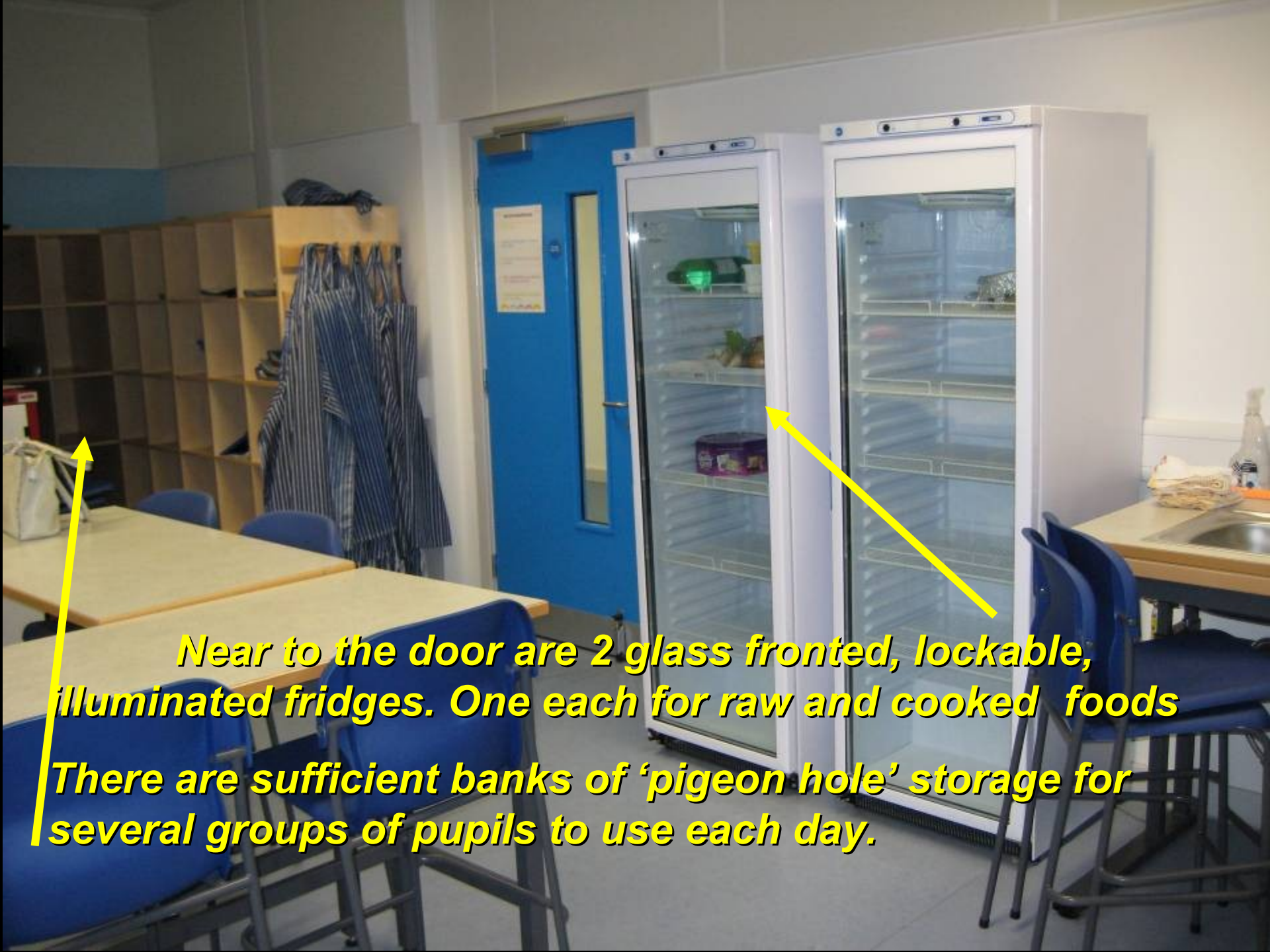
The catering equipment includes: a tunnel oven, a combi oven, a pasta maker, a blast chiller and an ice cream maker



Some of the catering equipment.



Height adjustable induction hob for a wheelchair user.



Near to the door are 2 glass fronted, lockable, illuminated fridges. One each for raw and cooked foods

There are sufficient banks of 'pigeon hole' storage for several groups of pupils to use each day.

Doing it Differently

Ideas for D&T accommodation

Case study prepared by:

Paul Clewes

Contact email:

paul@paulclewes.com

Date:

February 2008